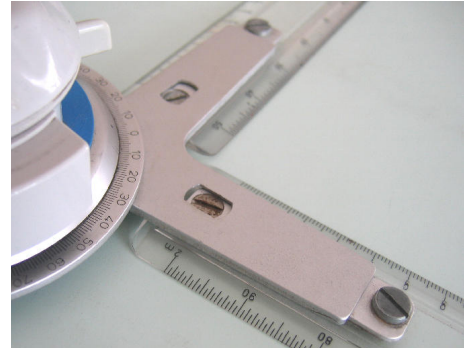


Integration of CAx/PDM in ERP-Systems

Get on the right track!



Overview

By using modern CAx-technologies and the implementation of integrated processes the time to market can be drastically reduced and quality significantly improved. To optimize results data from different departments of the value chain need to be available already in the beginning of the development phase. To ensure smooth information flow and process without interruption it is recommended to integrate the CAx or CAD- equivalent PDM-system into the ERP-system. This enables tracking of the product throughout its entire life cycle.

The challenge

Nearly all manufacturing companies eventually have to share current and redundant free CAx-data of the integrated product development process in its ERP system with other departments of the enterprise. This ensures the electronic reproduction of the product lifecycle. However the type of integration plays a critical role. Should the integration be made directly or through an integration platform? Should the product designer continue to work with the familiar CAD-equivalent team-PDM-system and transfer relevant data to the ERP system from there?

The answer to these questions depends especially on the individual company structure, the number of the CAD systems used and the requests of clients and customers. The following questions need to be answered to take the optimal path:

- ✓ How can your Product Design Process be optimally converted?
- ✓ Which is the leading IT system?
- ✓ Who is in charge of change management?
- ✓ The R&D organization can't be an island but has to be a part of the whole.

Your benefit

The CAx-integration into your ERP system, jointly with GOPA ITC designed and implemented, will ensure lasting benefits. For example design and support of your individual product development process, which is easy to use and adopted by the user community. The solution will deliver the following benefits for your company:

- ✓ Management of relevant material CAx-data along your requirements, integrated the ERP-system.
- ✓ Lasting safeguarding of your SW-architecture and your transition from R&D to manufacturing.
- ✓ Acceptance problems in R&D are eliminated early.
- ✓ R&D is not an isolated island, but integrated in the "digital company".
- ✓ Early integration of Product Design data in the product life cycle, to enable a companywide, parallel and integrated cooperation
- ✓ Opportunity to build a company wide engineering change management process through the management of product design data in the ERP-backbone
- ✓ Complete documentation and tracing of the CAD- data management as well as the entire CAD data export to customers and vendors.
- ✓ Reduction of the number of systems and interfaces.

Our solutions

Through our modular consulting model you are getting real world proven building blocs and methods, fitting to your individual organizational structure. Together with your specialist we will find the best suitable combination of process, organization and IT-System solution.

Maximize your competitiveness and innovation capabilities through the optimal design of your work processes and methods. Take advantage of the powerful functionality in your SW-architecture consisting of the CAx/PDM- and your ERP-system.

Profit from our know-how! We know the requirements of CAx-/PDM integrations and the different options to build the best possible solution, based your specific processes. We are able to understand your processes thoroughly and fast.

With our consulting methodology approach we support you to reach your goals, regardless if you want to optimize your existing processes or if you want to leverage additional potential through new application components of the SAP software or through third party products.

Your benefit overview

- ✓ Management of relevant product CAx-data through integration with your ERP-system
- ✓ Lasting safeguarding for an efficient transition from R&D to manufacturing
- ✓ Acceptance by R&D due to complete integration in the process
- ✓ Companywide integrated and parallel co-operation from the beginning
- ✓ Companywide engineering change management through management of the product engineering data in the ERP-system
- ✓ complete documentation and traceability of the CAD-data incl. all the data exports.
- ✓ Reduction of the number of systems and interfaces.

YOUR SUCCESS-OUR GOAL

GOPA ITC is your international consulting service partner for the support and the successful completion of IT projects. We open new innovation potentials and convert visions efficiently from concept to a fully functioning IT Solution.

Learn more: <http://www.gopa-itc.com>